

**IMPORTANT NOTICE:**

Warranty claims should be handled as follows:  
 Within 30 days of purchase: Contact your retailer.  
 After 30 days of purchase: Contact World

Marketing

**SEE REVERSE FOR IMPORTANT DETAILS!**

**WARRANTY REGISTRATION**

IMPORTANT: We urge you to fill out your warranty registration card within fourteen (14) days of date of purchase. You can also register your warranty on the internet at [www.worldmkting.com](http://www.worldmkting.com). Complete the entire serial number. Retain this portion of the card for your records.

**Comfort Home Products, Inc.**  
 16652 William Penn Hwy Box A  
 Huntingdon, PA 16652  
 Tel) 814-643-1775  
[www.worldmkting.com](http://www.worldmkting.com)

**SAVE THIS CARD!**

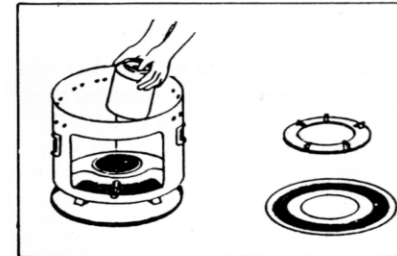
Place  
 Postage  
 Stamp  
 Here

**World Marketing of America, Inc.**  
 RT.22 West, P.O. Box 192  
 Mill Creek, PA 17060

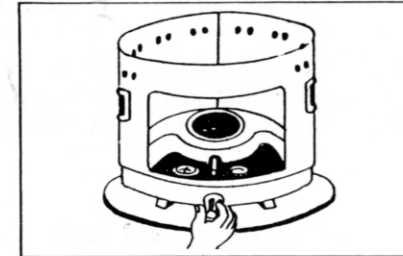
**\* WICK REPLACEMENT PROCEDURES \***

When the wick cleaning procedures described on a previous page does not improve the cooker performance proceed to replace it with a new wick following the pictorial instructions down below

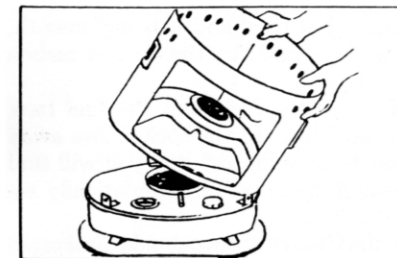
Note : Purchase a new wick referring the model number of the cooker for exact replica to replace the old wick.



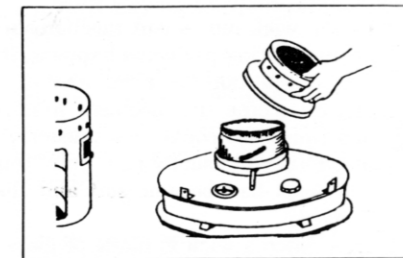
Remove pan support ribs, top plate and combustor unit lifting them upward.



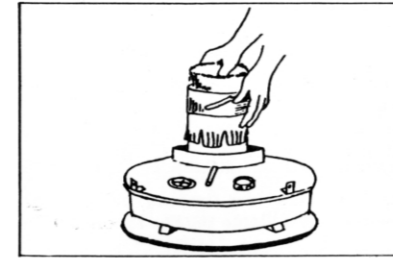
Pull the wick adjustor knob out at forward direction.



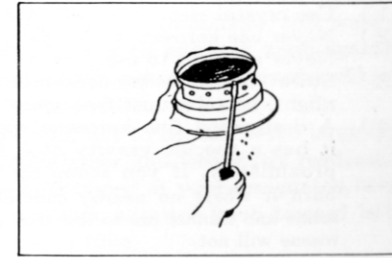
Separate the body from the fuel tank after removing 3 screws fixed at bottom edge of the body.



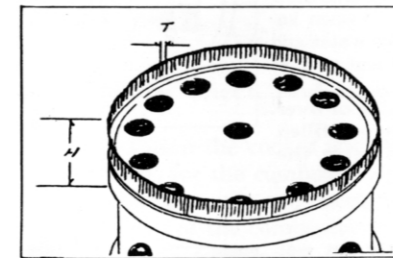
Remove 3 wing nuts and pull out the wick guide tube at upward direction.



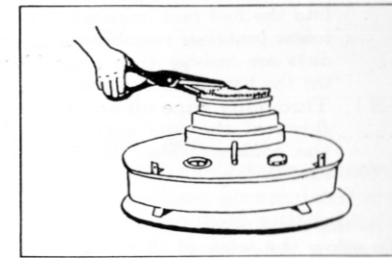
First remove a nut on the gear and the gear itself, next remove the old wick.



Scrap off carbon accumulation from the top of the wick guide tube before you proceed to replace the wick.



When a new wick is replaced, adjust the wick height to 6-7 mm high. The wick guide tube and (draft tube must form a concentric circle, avoid they from excentric, otherwise the wick movement will not be smooth. Assembling procedures are progressively in reverse order described above.



Trim off with a scissor if the wick height is uneven and check the over all performance before you refill the fuel and to operate the cooker.

**\* TO CHECK FUEL TANK \***

Wipe off the spills or overflows right after fuel filling to see if the fuel tank leaks and if so, completely evacuate the fuels from the tank and see your dealer to replace it with new tank.

**\* WHEN FIRE BREAK OUT \***

Do not upset but cool down and do first to turn the wick adjustor knob fully counter-clockwise to reach it at "EXTINGUISH" sign. Use fire extinguisher to spray over on the fire caught cooker. In case a fire extinguisher is not on hand, cover the fire caught cooker with a thick blanket and apply some cold water on top of it then bring the cooker outdoor. If it was the moment the fire did not reach to the fuel tank, a momentarily splashing plenty amount of water on the cooker might possibly put out their fire.

**\* ASSEMBLING INSTRUCTIONS \***

- When water and dirt stay at the bottom of the fuel tank first remove the remaining fuels with a pump and turn the tank upside down to drain water and dirt.
- Do not remove the rubber ring attached around at the bottom edge of the wick guide tube. It is an oilseal.
- If the wick guide tube is warped and not in the form of perfect circle, if you find hard to screw wing nuts to make the wick guide tube air tight seat against the fuel tank, you must be aware of the fact that this will in turn cause for heavy wick movement.
- Tightening screws and attaching small parts will call your care and attention during the cooker assembling procedures.
- When assembling procedures have been performed make a final over all check and test the operation of the cooker outdoor for your safety before make use of it.

**\* LONG TERM CARE \***

- Before to store the cooker for an off season period or to transport for the move do not forget to set the wick adjustor knob fully counter-clockwise at "EXTINGUISH" position.
- Drain the fuels completely out from the tank.
- Do not store it at a place where direct sunlight shine, nearby heating source exist, but store it at a rather cool dried shadowy place where no rain drops air exist.

**\* SPECIFICATION \***

<b>MODEL : TS-808, AWCS-85 KEROSENE FIRED COOKER</b>	
Type : Wick movement mechanism, blue flame.	
Fuel tank capacity : 3.5 LITER	
Fuel consumption rate : 0.22 L/Hr	
Heat generating efficiency : 48.81%	
Contineous operating time : 16 hours	
Wick type and measurement : Inflammable glass fiber	
Cylindrical thpe	inside diameter 95m/m
	thickness 2.5m/m
	length 148m/m

<b>MODEL : TS-909, KEROSENE FIRED COOKER</b>	
Type : Wick movement mechanism, blue flame.	
Fuel tank capacity : 3.5 LITER	
Fuel consumption rate : 0.22 L/Hr	
Heat generating efficiency : 48.81%	
Contineous operating time : 16 hours	
Wick type and measurement : Inflammable glass fiber	
Cylindrical thpe	inside diameter 95m/m
	thickness 2.5m/m
	length 152m/m

**Alpaca**  
**KEROSENE FIRED COOKER**



**Instruction Manual**

This manual contains complete instructions for **MODEL TS-808, AWCS-85, TS-909** Kerosene fired cooker. Read all the materials contained in this manual before you start to operate the cooker unit and you will find it quite handy to keep aside for your future reference.

CALIFORNIA RESIDENTS ONLY-WARNING: This product and the fuel used to operate this product (kerosene), and the products of combustion of such fuel, can expose you to chemicals including benzene, which is known to the State of California to be a chemical known to cause cancer and reproductive harm. For more information go to: [www.P65Warnings.ca.gov](http://www.P65Warnings.ca.gov)

Comfort Home products, Inc.  
 12256 William Penn Hwy Box A Huntingdon, PA 16652  
 Telephone : 800-776-9425 (9AM - 4PM EST)  
[www.worldmkting.com](http://www.worldmkting.com)



## CARE INSTRUCTIONS

Please observe following care instructions for your safety.

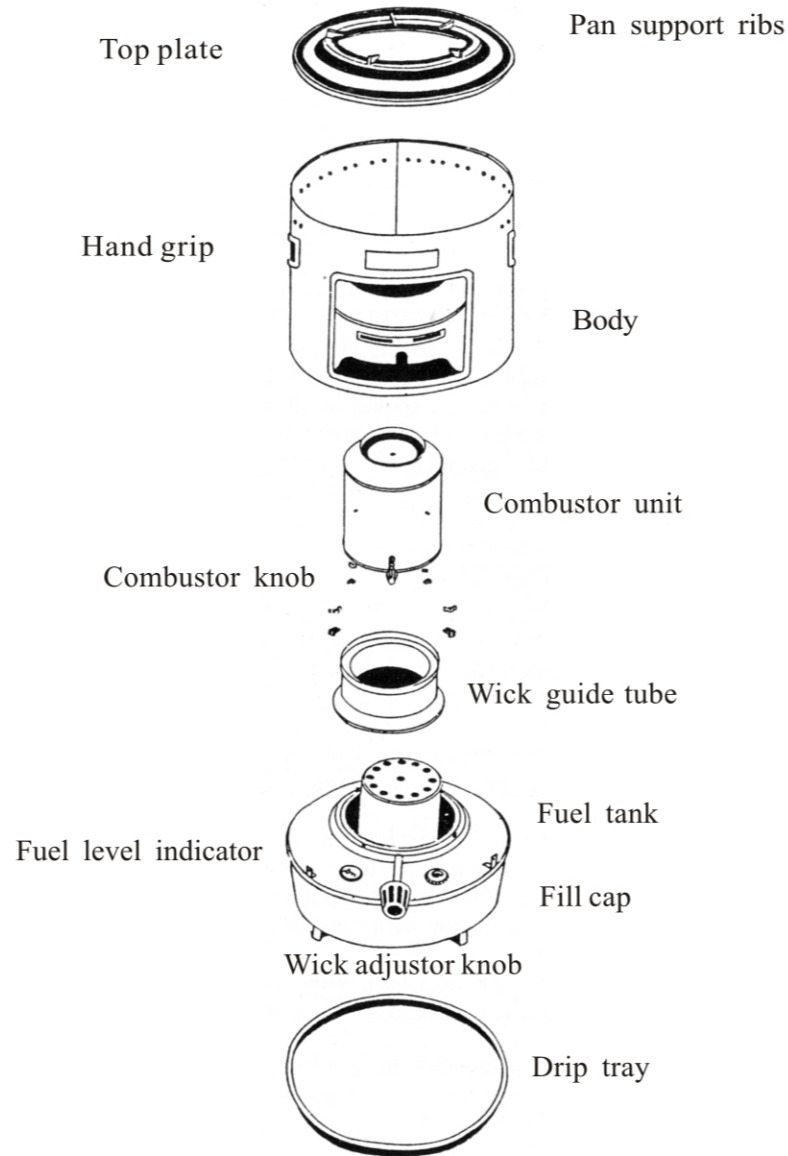
- Fill the fuel by operating a fuel pump. When refill or move make sure that the cooker is completely extinguished and cooled down.
- Do not operate when no one attended or leave it unattended.
- Do not fill other than Kerosene. Never fill gasoline, paint thinner or contaminated Kerosene with foreign matters.
- Do not operate the cooker where any flammable materials are nearby.
- Do not attempt to operate this cooker in areas where traffic is busy or wind blows, if the floor or the platform is unstable, not fairly leveled.
- Keep the fill cap close tight and care not to lost it.
- Always wipe off if any fuels spilled or over flowed before the operation.
- Do not store your fuel container in a place where it is exposed under direct sunlight. Store it in a safe storage space to avoid possible fire hazard.
- For wick cleaning, at least once a month leave the cooker burns continuously until its flame dies away itself. Each time the remaining fuel in the fuel tank is nearly empty.
- When burning flame is adjusted for larger flame height, rotate the adjustor knob gradually clockwise to reach your designated flame size.
- Before you attempt to operate the cooker after long storage period, follow the care instruction described in the daily care instruction printed on a following page.

## TROUBLE SHOOTING GUIDE

Following chart indicates symptoms of troubles you might face, possible causes of and how to do with them. Check out the criss cross point where possible causes column joints with symptoms row and extend horizontal line to meet remedies.

symptom	(Possible Causes)	(Remedies)
Flame appears only on one side of burner	Not ignited or hard to set flame on	Fuel consumption at rapid rate
	Produces bad fume	Wick moves heavily
	Flame spreads too slowly	Wick movement is not smooth
	Burns with red flame and creates soot	Prolonged extinguishment
	Red flames	Abnormal sound
Wick is wet with water	Wick is elevated too high	Wick is too low in its position
Wick is elevated too high	Uneven wick height	Combustor unit is unstably seated
Wick is too low in its position	Some obstructor between wick assembly and wick guide tube	Gears are disengaged in the movement mechanism
Uneven wick height	A little or out of fuels in the tank	Tar or carbon accumulated on the wick
Combustor unit is unstably seated	Wick is forced and became out of the shape	Fuel is contaminated with water
Some obstructor between wick assembly and wick guide tube	Fuel is contaminated with water	Low quality kerosene is used
Gears are disengaged in the movement mechanism	Low quality kerosene is used	Fuels spilled
A little or out of fuels in the tank	Tar or carbon accumulated on the wick	Wick is forced and became out of the shape
Wick is forced and became out of the shape	Fuel is contaminated with water	Low quality kerosene is used
Fuel is contaminated with water	Low quality kerosene is used	Fuels spilled
Low quality kerosene is used	Fuels spilled	

## PARTS ILLUSTRATED



## OPERATING INSTRUCTION

### \* Fuel Requirements \*

- Use crystal clear kerosene only.
- Never use kerosene contaminated with oils or water. Never attempt to use gasoline.
- Store your kerosene container in a place where no heat, no direct sunlight, no rain, dust free space available.
- A designated fine kerosene with no impurity contents is specified as it has a specific gravity of 0.8, a flashing point at 40 C and up approximately. If you scoop up half spoon of unknown fuel and try to burn it where no nearby combustibles are, since the flashing point of gasoline and thinner ore so low that they easily put a flame on the spoon but kerosene will not.

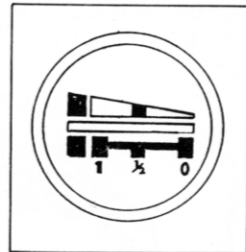
### \* Fuel Filling Procedure \*

- Open fill cap and fill the fuel through a funnel or by a fuel pump observing dial pointer reaches (1) in the dial of fuel level indicator and stop the filling beyond this point.
- A careful operation must be exercised during the fill procedure to avoid any impurity contents flow into the fuel tank together with the fuel when kerosene container reaches near empty, since water and dirt are heavier than normal kerosene and stay at the bottom of the container.
- Thoroughly wipe off and clean the spills or over flows of the fuel each time you have refilled the cooker. Close the fill cap tight after the fuel filling.

### \* Lighting Procedure \*

To allow the wick of this cooker sufficiently get wet with kerosene it will usually take you 10 minutes or so to wait before igniting the cooker.

- Grab the wick adjustor knob provided front side of the cooker and turn it fully clockwise until it stops at "BURN" sign printed on label.
- Ignite a match or gasmatch with either hand and push the combustor knob upward with the other hand so that you can put flames on the wick. Put flames 3-4 spots on the wick even spaced around the top circle of the wick. In this way you can avoid a prolonged bad fumes and get a quicker flame circle. A care must be exercised not to drop a match stick on the wick but throw it on a safer place.
- Right after this lighting procedure described above, jiggle the combustor knob a few times so that the combustor unit can sit air tight. Otherwise a puff of a smoke might be produced even creating soot.



## FLAME HEIGHT ADJUSTMENT

When the flame sets on even circle around the top of the wick sleeve wait about 1 minute and you will see the flame turns to a bright blue color indicating a perfect combustion had taken in its place. If the combustor unit were not air tight sit (in this occasion please jiggle the wick adjustor knob again) or the wick height is too high than the height it designated and a smoke will arise with a bad fume and the flame would be in a red color.

Keep an eye on the flame height and its color not to become a too large flame or the tip of flame turns to a golden yellow color and frequently readjust the flame height so that it could always be maintained at your designated height. This could easily be done by turning the wick adjustor knob toward left (to "EXTINGUISH" sign) a little by little at a time.

### \* EXITNGUISHING PROCEDURE \*

Turn the wick adjustor knob gently and gradually toward to left (to "EXTINGUISH" sign) until it stops. It will take you about 3 minutes or so to let the cooker completely extinguish for which you make sure of it.

### \* DAILY CARE INSTRUCTION \*

#### Where To Check and How

Always keep the cooker and the place around it clean.

- CARE for the combustor cylinder and the wick guide tube. Remove the combustor unit and check if tar or carbon has been accumulated around the top of the combustor cylinder as well as around the wick guide tube. You can remove the tars and carbons by scrapping it with a flat screw driver blade and it is a must.
- If the wick movement mechanism is somewhat hard and it is not smooth, if the lighting problems happens, it had surely caused by the tar and carbon accumulation described above.

To overcome this problem first remove kerosene fuel from the fuel tank and burn the cooker continuously until the flame of the cooker dies away itself (it will usually take you 30 minutes to 60 minutes) and you will find the wick had became soft and the tars and carbons are automatically removed.

Note : Since a wick is made of glass fiber that won't wear out and prolonged operation will naturally accumulate the tar and carbon around the wick causing insufficient burning, a bad flame.

The wick cleaning procedures described above will be great help to maintain clean ideal burning, make a routine to practice this procedure at least once each operating month.

## ALPACA PRODUCT WARRANTY

### LIMITED WARRANTY:

A limited warranty is extended to the original purchaser of this heater and warrants against malfunction due to manufacturing defects for a period of (1) one year from the date of retail purchase. Please read and follow all details noted below. CLAIMS HANDLED AS FOLLOWS:

- WITHIN 30 DAYS OF PURCHASE:
  - Contact our Customer Service Department at 1-800-776-9425. You must have the model number, serial number and date of purchase. - They will provide you with further instructions.
- AFTER 30 DAYS AND WITHIN THE 1 YEAR WARRANTY PERIOD:
  - DO NOT RETURN TO PLACE OF PURCHASE.
  - Contact our Customer Service Department at 1-800-776-9425. You must have the model number, serial number and date of purchase. - They will provide you with further instructions, which may include: providing repair parts, heater service or replacement at our option. CALL 1-800-776-9425 FOR SERVICE (9AM-6PM MON. - FRI.) or EMAIL US AT info@worldmktng.com

DUTIES OF THE OWNER:  
This heating appliance must be operated in accordance with the written instructions furnished with this heater. This warranty shall not excuse the owner from properly maintaining this heater in accordance with the written instructions furnished with this heater. A bill of sale, canceled check or payment record must be kept to verify purchase date and establish warranty period. Original carton should be kept in case of warranty return of unit. WHAT IS NOT COVERED:

- Damage resulting from use of improper fuel.
- Damage caused by misuse or use contrary to the owners manual and safety guidelines.
- Damage caused by a lack of normal maintenance.
- Regular maintenance items (wicks, ignitors, batteries, filters, nozzles, fuses, etc.)
- Use of non-standard parts or accessories.
- Accessory items

LIMITATIONS:  
This warranty does not imply or assume any responsibility for consequential damages that may result from the use, misuse, or the lack of routine maintenance of this heating appliance. A cleaning fee and the cost of parts may be charged for appliance failures resulting from lack of maintenance. This warranty does not cover claims which do not involve defective workmanship or materials.

FAILURE TO PERFORM GENERAL MAINTENANCE (INCLUDING CLEANING) WILL VOID THIS WARRANTY.  
THIS LIMITED WARRANTY IS GIVEN TO THE PURCHASER IN LIEU OF ALL OTHER WARRANTIES, EXPRESSED OR IMPLIED, INCLUDING BUT NOT LIMITED TO THE WARRANTIES OF MERCHANTABILITY OF FITNESS FOR A PARTICULAR PURPOSE. THE REMEDY PROVIDED IN THIS WARRANTY IS EXCLUSIVE AND IS GRANTED IN LIEU OF ALL OTHER REMEDIES. IN NO EVENT WILL WORLD MARKETING OF AMERICA BE LIABLE FOR INCIDENTAL OR CONSEQUENTIAL DAMAGES.

Some states do not allow limitations on how long an implied warranty lasts, so the above limitation may not apply to you. Some states do not allow the exclusion or limitation of incidental or consequential damages so the above limitation or exclusion may not apply to you.

TO REGISTER THE WARRANTY ON YOUR HEATER, PLEASE FILL OUT THIS CARD COMPLETELY AND MAIL WITHIN 14 DAYS FROM DATE OF PURCHASE OR REGISTER ON-LINE AT www.worldmktng.com

NAME: \_\_\_\_\_ PHONE: ( ) \_\_\_\_\_ EMAIL: \_\_\_\_\_  
ADDRESS: \_\_\_\_\_ CITY: \_\_\_\_\_ STATE: \_\_\_\_\_ ZIP: \_\_\_\_\_  
MODEL: \_\_\_\_\_ SERIAL #: \_\_\_\_\_ DATE PURCHASED: \_\_\_\_\_  
PURCHASED AT: \_\_\_\_\_ TYPE OF STORE: \_\_\_\_\_  
CITY & STATE WHERE PURCHASED: \_\_\_\_\_ PRICE PAID: \_\_\_\_\_

Please Take a Minute To Give Us Your Answers To The Following Questions.  
All Responses Are Used Solely For Market Research And Are Held In Strict Confidence.  
Who primarily decided this purchase? Mal Female 18-24 25-39 40-59 60 and over  
Occupation? Homemaker e Educator Professional Sales/Marketing Clerical Crafts Worker  
Operator/Laborer Service Worker Retired Student Other  
Family income? Under \$20,000 \$20-39,000 \$40-59,000 \$60-79,000 Over \$80,000  
Do you own any other portable heaters? Yes No If yes, type brand  
How do you intend to use your new heater? Emergency Heat Primary Heat Save Energy Portable Heat  
How did you become aware of this heater? In-Store Display Newspaper Ad Magazine Ad  
Friend/Relative TV Commercial Store Salesperson Other  
What made you select this heater? Style Size/Portability Durability Warranty Package  
Other  
Do you: own rent Would you recommend this heater to a friend? Yes No  
Please give us your comments:  
Part No. 23APWTY-English THANK YOU FOR COMPLETING THIS FORM! Printed in So. Korea